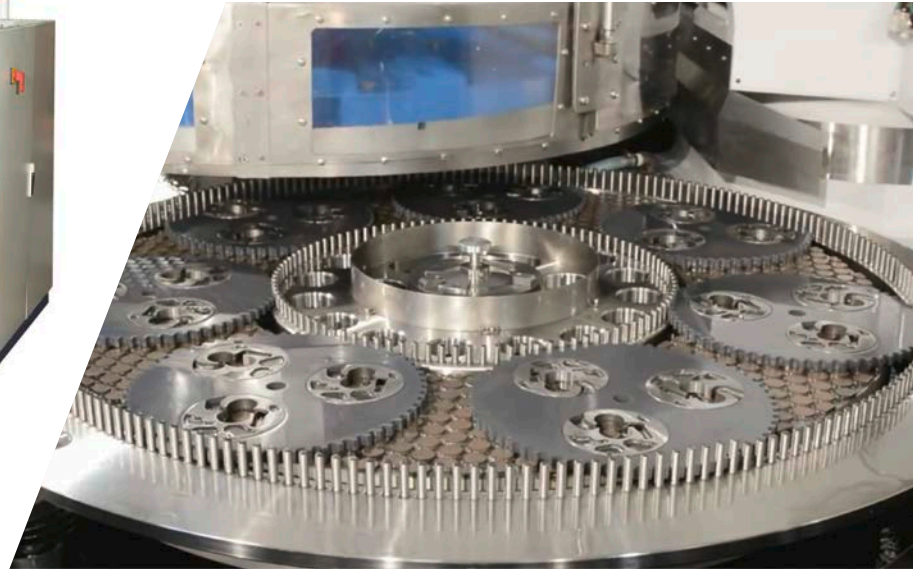





# DSG 1200

DUAL FACE FINE GRINDING MACHINE SYSTEM



WORK PIECES UP TO  
430 MM DIAMETER  
200 MM THICKNESS

## BASED ON A THREE WAY PLANETARY CONCEPT

-  Versatile and unique solution for solving critical tolerance issues on parts requiring:
  - Flatness capabilities:  $< 1\mu^*$
  - Part to part size variance:  $< 4\mu^*$ ,
  - Parallelism:  $< 3\mu^*$
  - Surface finish:  $< 0.25\mu^*$
  - Typical stock removal:  $0.6\text{ mm}^*$  (\* achieved on in house trials)
-  Processing of a wide range of materials and components including glass, ceramics, crystals and ferrous metals
-  Process is optimized by utilizing three programmable and independent drives

FOR PRECISE AND REPEATABLE RESULTS AT AN ECONOMICAL PRICE



## HIGHLIGHTS DSG 1200

### STANDARD FEATURES

- ☑ Cast iron base
- ☑ Compact form factor
- ☑ Practical design
- ☑ Variable speed drive motors
- ☑ Upper head position swivel
- ☑ Uniform coolant distribution

- ☑ Non contact probe
- ☑ Gap loading (indexing)
- ☑ Integrated modem
- ☑ Production flexibility
- ☑ PLC and HMI touchscreen
- ☑ Custom programming

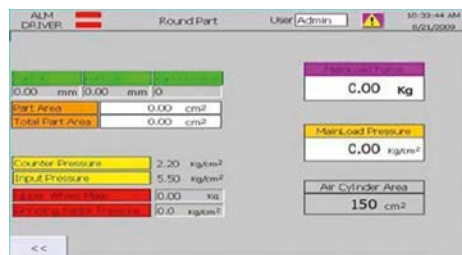
### OPTIONAL FEATURES

- ☑ Parts loading systems
- ☑ Filtration systems
- ☑ Chiller for grinding oil
- ☑ Non standard voltages
- ☑ Corporate colours
- ☑ Dual units (metric and imperial)



**Program storage screen**

Program storage is available for up to thirty process recipes



**Pressure calculator**

Automatically calculates optimum grinding pressure for round or square parts



**Size control screen**

Used for the initial setup of size control, plus any fine adjustments required

TECHNICAL DATA	DSG 1200
Diameter plates [mm]	1240
Carriers	pin driven
Carrier configurations	7
Max. work piece thickness [mm]	200
Max. work piece diameter [mm]	430
Drive system	3 way drive system
Upper/lower wheel drive [kW]	30
Upper/lower wheel drive max. speed [rpm]	150
Inner carrier pin drive drive [kW]	8
max. speed [rpm]	100
Max. downforce [kg]	1800
Machine dimensions [W x D x H] [mm]	2930 x 2700 x 2265
Machine weight approx. [kg]	11600
Electrical	380 / 415 V, 3 Ph, 50 Hz 230 / 460 V, 3 Ph, 60 Hz
Air	600 kPa / 6 bar minimum
Water	100 kPa / 1 bar (if applicable)



**Auto force control**

Maintains a steady cut rate even for high stock removal rates, enables consistent production removal rates

**GET IN TOUCH WITH US TODAY**  
**TOGETHER WE WILL FIND A SOLUTION**  
**FOR YOUR REQUIREMENTS**

### LAPMASTER WOLTERS

Phone: 1 877 352 8637  
 sales@lapmaster-wolters.com  
 www.lapmaster-wolters.com